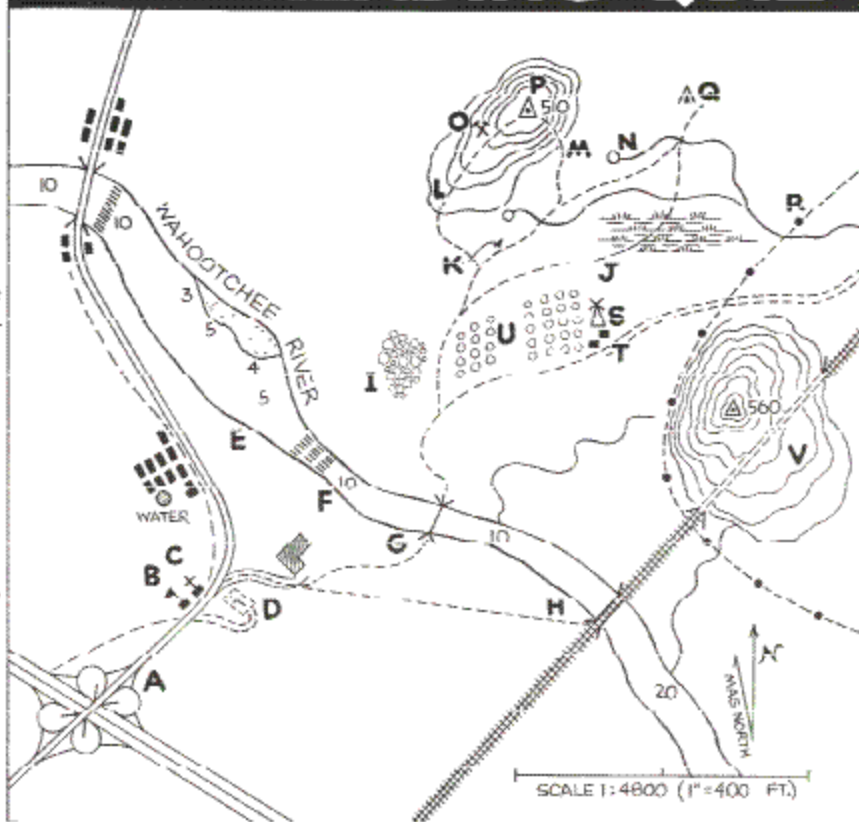


PROBLEMS:

DATE: JULY 9, 1967. LET'S SUPPOSE YOU'RE STARTING A HIKE AT **A** AND HEADING FOR **Q**.

- ① FOR LOCAL INFORMATION OR IN CASE OF EMERGENCY WOULD YOU GO TO **B**, **C**, **D**, **E** OR **F**? WHY?
- ② THE WAHOOTCHEE RIVER FLOWS FROM **NW** TO **SE**. TO PADDLE DOWNSTREAM, WOULD IT BE SAFER TO LAUNCH CANOES AT **F** OR **E**? WHY?
- ③ WOULD YOU CROSS THE RIVER AT **G** OR **H**? WHY?
- ④ WHERE WOULD YOU MOST LIKELY FIND FIREWOOD—**I** OR **U**? WHY?
- ⑤ WHICH TRAIL WOULD YOU TAKE—**J** OR **K**? WHY?
- ⑥ WHICH IS THE EASIER WAY TO REACH **P**—TRAIL **L** OR **M**? WHY?
- ⑦ WOULD YOU AVOID GOING INTO **O**? WHY?
- ⑧ HOW HIGH IS HILL **P**?
- ⑨ WHERE IS THE NEAREST PLACE FROM **Q** TO GET WATER?
- ⑩ WHAT DOES THE SYMBOL AT **Q** STAND FOR?
- ⑪ THERE ARE STEEP TRAILS ALONG **R**. IS IT SAFE TO CLIMB THEM?
- ⑫ WHAT DOES THE SYMBOL AT **S** STAND FOR?
- ⑬ IF YOU WANTED SOME WATER FROM A WELL NEAR **U**, WHERE WOULD YOU ASK? WHY?
- ⑭ WHERE IS PROBABLY THE SAFEST PLACE ON THE RIVER TO GO SWIMMING?
- ⑮ DOES RR GO OVER HILL AT **V**?

MAP READING QUIZ



ANSWERS:

- ① NO. BROKEN LINES INDICATE A TUNNEL.
- ② AT THE SANDY BEACH ACROSS FROM **E**.
- ③ AT **T**. THOSE SYMBOLS SHOW A WINDMILL.
- ④ ABSOLUTELY NOT. THEY'RE POWER LINES.
- ⑤ A CAMPSITE.
- ⑥ THE SPRING AT **N**.
- ⑦ 50 FEET.
- ⑧ AVOID IT. IT'S A QUARRY.
- ⑨ **L**. THE CLUSTER CONTOUR LINES OF **L** SHOW A STEEP CLIMB.
- ⑩ **K, J** GOES THROUGH A SWAMP.
- ⑪ **I**. BECAUSE **I** IS SCRUB WOODS. **U** IS AN OPEN AREA.
- ⑫ USE THE FOOTBRIDGE AT **G**.
- ⑬ LAUNCH THEM AT **F**. THE MAP SHOWS RAPIDS BETWEEN **E** AND **F**.
- ⑭ IN SUMMER, **D** IS A CEMETERY. A SCHOOL AND PROBABLY CLOSED TELEPHONE LINE NEXT TO **T**. **B** IS
- ⑮

